



Numerical Simulation of Arc Lightning Plasma

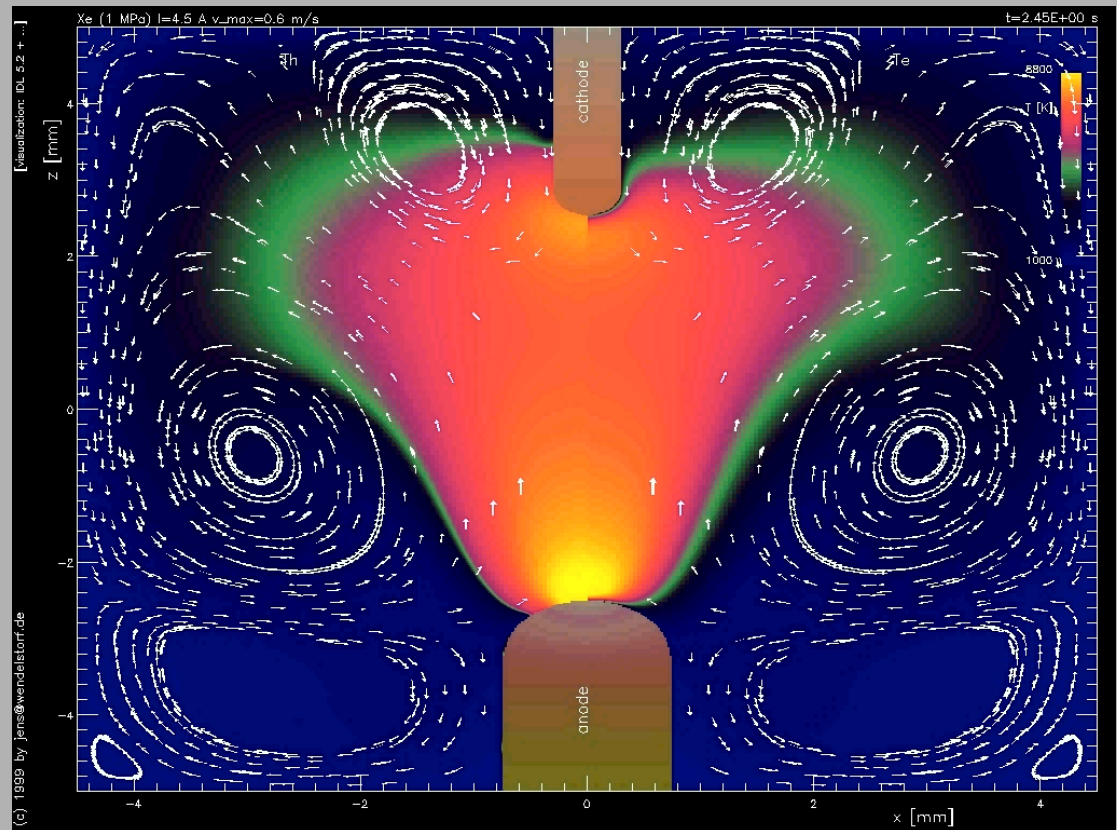


Institute for Theoretical Physics, TU Braunschweig

Institute for Welding Techniques, TU Braunschweig

Arc Lightning Plasma

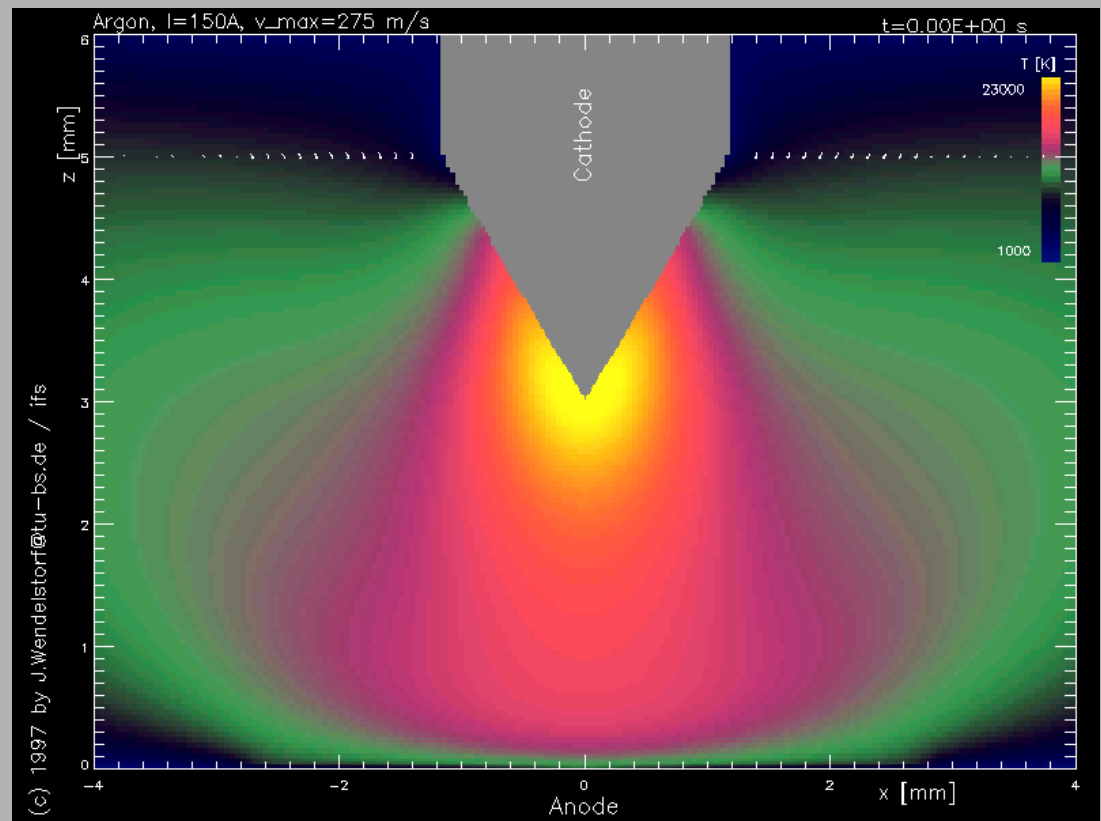
- ◆ Xe lamp
- ◆ 2 component model
- ◆ Fluid description (ions and electrons)



[J. Wendelstorf et al., Diss., TU BS, 2000]

Welding Plasma

- ◆ Hg lamp, Xe lamp
- ◆ 2 component model
- ◆ Fluid description (ions and electrons)



[J. Wendelstorf et al., Diss., TU BS, 2000]